

**THE PAPERS OF
HANNAH CLOTHIER HULL
1889–1958**

Guide to the Scholarly Resources Microfilm Edition

Published in cooperation with the
Swarthmore College Peace Collection
Swarthmore, Pennsylvania 19081

SR *Scholarly Resources Inc.*
Wilmington, Delaware

Also available from Scholarly Resources on microfilm:

- Records of the Women's International League for Peace and Freedom, United States Section, 1919–1959
- Collected Records of the Woman's Peace Party, 1914–1920
- The Papers of A. J. Muste, 1920–1967
- The Papers of Edwin Doak and Lucia Ames Mead, 1876–1936
- The Papers of Emily Greene Balch, 1875–1961
- The Records of the Women's Peace Union, U.S. Branch, 1921–1940
- Records of the Assistant Chief of Naval Personnel for Women, 1942–1972: The WAVES File
- The Papers of Elizabeth Cady Stanton and Susan B. Anthony

© 1991 Scholarly Resources Inc.

Printed and bound in the United States of America

Scholarly Resources Inc.
104 Greenhill Avenue
Wilmington, DE 19805-1897

Telephone (302) 654-7713 or toll-free within the continental U.S.:
1-800-772-8937.
FAX: (302) 654-3871

ISBN 0-8420-4113-3

Acknowledgment

Scholarly Resources Inc. is grateful to Hannah Clothier Roberts for her permission to make this micropublication available for research.

Note to Researcher

Researchers citing materials in this edition of the Papers of Hannah Clothier Hull, 1889–1958, should use the following format:

Papers of Hannah Clothier Hull, 1889–1958, Swarthmore College Peace Collection, Scholarly Resources microfilm edition.

Quotations for publication or further reproduction of materials contained within the Scholarly Resources edition of the Papers of Hannah Clothier Hull, 1889–1958, except for purposes of scholarly criticism or comment as specified in Title 17, U.S. Code, require specific permission from copyright owners and the Swarthmore College Peace Collection.

Hannah Clothier Hull Papers, 1889, 1892–1958

96.2 cm. (3 feet)

Document Group:

DG 16

Received:

1950, 1954, 1958, and 1976

Issuing Body:

Hannah C. Hull, Jane Addams,
Emily Greene Balch and others

Acquisition:

Hannah Clothier Hull, Caroline
Biddle Lippincott

Restrictions:

None

Microfilm:

6 Reels

Finding Aids:

Checklist

This bulk of this collection was microfilmed under NEH Grant No. RC 27706-77-739. The correspondence from Hannah Clothier Hull to Caroline C. Biddle (Lippincott) was filmed by Scholarly Resources Inc.

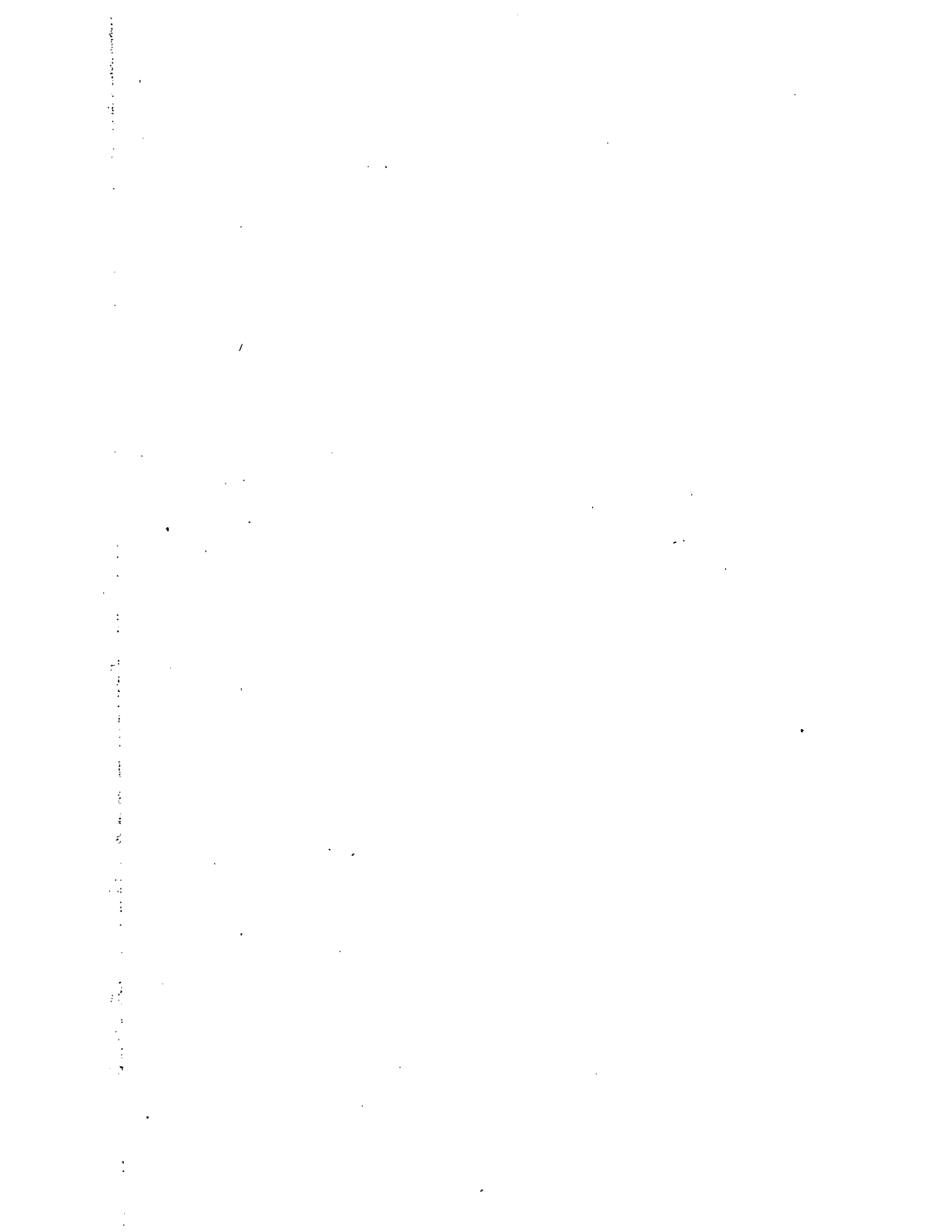


Table of Contents

| | |
|-------------------------|---|
| Introduction | 1 |
| History | 1 |
| Scope and Content | 1 |
| Provenance | 2 |
| Reel Contents | 3 |

History

Hannah Clothier Hull (1872–1958) was one of the founders of the Woman's Peace Party and the Women's International League for Peace and Freedom (WILPF). She served as a national officer of the WILPF for nearly forty years and was also active in other social reform movements. A member of a wealthy Quaker family, Hannah Clothier graduated from Swarthmore College in 1891. She first worked at a Philadelphia settlement house and then entered the graduate program in social work at Bryn Mawr College. In the following year she married William Isaac Hull, a fellow pacifist and professor of political science at Swarthmore.

From 1914 to 1919, Hannah Clothier Hull was the chairman of the Pennsylvania branch of the Woman's Peace Party. She became more involved with the national WILPF in 1922 when she attended an emergency International Conference of Women at The Hague. Hull served as an officer of the U.S. section of the WILPF from 1924 to 1939 and as the honorary president until her death in 1958. This work drew her into close association with Jane Addams, Emily Greene Balch, Carrie Chapman Catt, and with peace leaders in all parts of the world.

Hull had many other interests apart from the peace movement. She worked in the woman suffrage campaign and women's rights, had some interest in temperance, was a member of the Friends Peace Committee of the Philadelphia Yearly Meeting, and was on the board of the American Friends Service Committee (1928–1947).

Scope and Content

The Papers of Hannah Clothier Hull contain personal and professional correspondence (1889–1958), speeches, articles, and manuscript notes. There are also biographical materials, family papers, newspaper clippings, and photographs.

Among Hull's early personal correspondence is a folder of letters she wrote to her friend Caroline Cooper Biddle. These letters chart the close friendship between the two young women at the turn of the century.

A large part of the collection reflects Hull's work in the peace movement. There is correspondence with other WILPF officers and

members, financial statements, press releases, and League records. A file documenting attacks on the WILPF (1924–1937) is also included. Hull's interest in women's rights is represented by items on woman suffrage, correspondence on WILPF relations with the National Council of Women of the United States, and materials on women's movements in China and India.

Among the many correspondents in this collection are Jane Addams, Emily Greene Balch, Carrie Chapman Catt, Alice Hamilton, Lida Gustava Heymann, Lola Maverick Lloyd, Lucia Ames Mead, Jeannette Rankin, Rosika Schwimmer, Anna Garlin Spencer, Ellen Gates Starr, and Mary E. Woolley.

Provenance

Most of the materials in this collection were given to the Swarthmore College Peace Collection by Hannah Clothier Hull herself in 1950, 1954, and 1958. A few records were presented by her daughters following her death in 1958. In December 1976 the letters from Hannah Clothier Hull to Caroline Cooper Biddle (Lippincott) were received as a gift of Caroline Biddle Lippincott through the courtesy of Dr. H. Chandler Forman. Also included in this gift was a clipping of the biography of Isaac H. Clothier (Hannah's father) and two photographs of Hannah Clothier Hull.

6. June-July 1936
7. August 1936
8. September-December 1936

- Box 4 Correspondence, 1937-38
1. January-March 1937
 2. April-June 1937
 3. July-September 1937
 4. October-December 1937
 5. January-March 1938
 6. April-June 1938
 7. July-October 1938
 8. November-December 1938
- Reel 4
- Box 5 Correspondence, 1939-1957, and no date
1. no date
 2. January-March 1939
 3. April-June 1939
 4. July-December 1939
 5. 1940
 6. 1941-1947
 7. 1948-1957
- Box 6 Correspondence by subject, 1918-1958
1. Jane Addams, 1918-1931
 2. Jane Addams, 1932-1935
 3. Attacks, 1924, 1926-1937
 4. Emily Greene Balch, 1924-1929
 5. Emily Greene Balch, 1930-1935
 6. Emily Greene Balch, 1936-1939
 7. Emily Greene Balch, 1940-1958
 8. Emily Greene Balch, no date
 9. Carrie Chapman Catt, 1925, 1931-1937
 10. Mohandas Karamchand Gandhi, 1926
 11. National Council of Women, 1924-25
 12. WILPF Fortieth Anniversary, 1954-55
- Reel 5

13. WILPF Education Committee, 1937
14. WILPF Labor Committee, 1937
15. WILPF Women's Committee for the Recognition of Russia, 1925

Box 7 **Records and Miscellaneous**

1. Jane Addams-Meeting at Hull home, December 1, 1933
2. Tributes to Jane Addams, by Hannah Clothier Hull, 1935 and no date
3. Jane Addams-Peace Fund and Legacy Fund, 1946-1949
4. China Trip, 1929
5. Geneva Disarmament Conference, 1932
6. India Trip, 1928
7. Woman's Suffrage, 1909-1913

Reel 6

Box 8 **Records and Miscellaneous**

1. Speeches and notes for Hannah Clothier Hull
2. Speeches and notes for Hannah Clothier Hull
3. Articles by Hannah Clothier Hull, 1925-1958
4. Hannah Clothier Hull, Swarthmore Class of 1891
5. Miscellaneous Photographs of Hannah Clothier Hull
6. Clippings by and about Hannah Clothier Hull
7. Family Papers and Memorabilia
8. Biographical material about Hannah Clothier Hull
9. Hannah Clothier Hull-Title Papers

