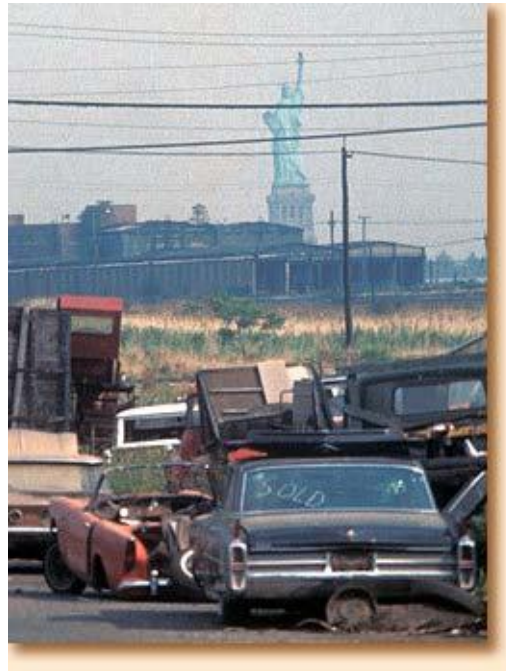


*An Index to the Microfilm Edition of*

# **The War on Poverty and the Office of Economic Opportunity**

## **Part 2: Community Profiles Northeastern States**



**Primary Source Media**





# **The War on Poverty and the Office of Economic Opportunity Part 2: Community Profiles Northeastern States**

Guide Compiled by  
Alissa De Rosa

**Primary Source Media**



## Primary Source Media



### **The War on Poverty and the Office of Economic Opportunity Part 2: Community Profiles Southern States**

Compilation © 2011 Primary Source Media

ALL RIGHTS RESERVED. No part of this work covered by the copyright herein may be reproduced, transmitted, stored, or used in any form or by any means graphic, electronic, or mechanical, including but not limited to photocopying, recording, scanning, digitizing, taping, Web distribution, information networks, or information storage and retrieval systems, except as permitted under Section 107 or 108 of the 1976 United States Copyright Act, without the prior written permission of the publisher.

For product information, contact us at  
**Gale Customer Support, 1-800-444-0799**

For permission to use material from this text or product,  
submit all requests via email online at [robert.lester@cengage.com](mailto:robert.lester@cengage.com)

ISBN: 978-1-57803-451-5

#### **Primary Source Media**

12 Lunar Drive, Woodbridge, CT 06525  
Tel: (800) 444-0799 and (203) 397-2600  
Fax: (203) 397-3893

Visit the Primary Source Media website at [\*\*gale.cengage.com/psm\*\*](http://gale.cengage.com/psm)  
Visit Gale online at [\*\*gale.cengage.com\*\*](http://gale.cengage.com)  
Visit our corporate website at [\*\*www.cengage.com\*\*](http://www.cengage.com)

**Printed in the United States of America**

# TABLE OF CONTENTS

Scope and Content Note.....	v
Source Note.....	vii
Editorial Note.....	vii
Reel Index	
<b>Reel 1</b>	
Connecticut, Fairfield thru Windham Counties.....	1
Maine, Androscoggin thru York Counties.....	1
<b>Reel 2</b>	
Maine, Androscoggin thru York Counties cont.....	2
Massachusetts, Barnstable thru Worcester Counties.....	2
New Hampshire, Belknap thru Sullivan Counties.....	3
<b>Reel 3</b>	
New Hampshire, Belknap thru Sullivan Counties cont.....	3
New Jersey, Volume I of II, Atlantic thru Mercer Counties.....	3
New Jersey, Volume II of II, Middlesex thru Warren Counties.....	4
<b>Reel 4</b>	
New Jersey, Volume II of II, Middlesex thru Warren Counties cont.....	4
New York, Volume I of IV, Albany thru Essex Counties.....	5
<b>Reel 5</b>	
New York, Volume I of IV, Albany thru Essex Counties cont.....	5
New York, Volume II of IV, Franklin thru Niagara Counties.....	6
<b>Reel 6</b>	
New York, Volume III of IV, Oneida thru Schenectady Counties.....	6
New York, Volume IV of IV, Schoharie thru Yates Counties.....	7
<b>Reel 7</b>	
New York, Volume IV of IV, Schoharie thru Yates Counties cont.....	8
Pennsylvania, Volume I of V, Adams thru Centre Counties.....	8
<b>Reel 8</b>	
Pennsylvania, Volume I of V, Adams thru Centre Counties cont.....	9
Pennsylvania, Volume II of V, Chester thru Franklin Counties.....	9
Pennsylvania, Volume III of V, Fulton thru Lycoming Counties.....	10

**Reel 9**

Pennsylvania, Volume III of V, Fulton thru Lycoming cont..... 10  
Pennsylvania, Volume IV of V, Mc Kean thru Schuylkill Counties..... 10

**Reel 10**

Pennsylvania, Volume IV of V, Mc Kean thru Schuylkill Counties cont..... 11  
Pennsylvania, Volume V of V, Snyder thru York Counties..... 11  
Rhode Island, Bristol thru Washington Counties..... 12

**Reel 11**

Vermont, Addison thru Windsor Counties..... 12

## SCOPE AND CONTENT NOTE

The most ambitious and controversial part of the Great Society was its initiative to end poverty. The centerpiece of the War on Poverty was Office of Economic Opportunity (OEO) to oversee a variety of community-based antipoverty programs. Central to OEO's mission was the idea of "community action," the participation of the poor in framing and administering the programs designed to help them.

In an effort to assess the scale of poverty in America, the OEO developed the Community Profile Project. The Community Profile Project was designed to increase the scope, accessibility, accuracy, and utility of information supporting the planning and evaluation of programs for community improvement.

The Project compiled data for 3,135 U.S. counties and county equivalents that subdivided each state into independently-administered localities. Each profile, composed as a narrative with statistical indices, contained information showing general poverty indicators, size and composition of the poor population, and selected aspects of geography, demography, economy, and social resources.

Each profile is subdivided into six sections with a number of sub-sections: Poverty Indicators, Profile of the Poor, Geographic Profile, Demographic Profile, Economic Profile, and Social Profile.

### Poverty Indicators

The Poverty Indicators highlight social and economic characteristics which vary with the nature and level of poverty. These include:

Magnitude of poverty	Severity of poverty	Economic compensation
Economic activity	Family resources	Employment conditions
Educational achievement	Functional illiteracy	Adequacy of health care
Health status	Sufficiency of housing	Agricultural prosperity

### Profile of the Poor

This includes:

Definition of Poor	Level of poverty	Changes in poverty level
Severity of poverty	Magnitude of poverty	Race & residence of the poor

### Geographic Profile

Poverty is a regional phenomenon in the U.S. Not only is it concentrated more heavily in specific sections of the country, it also varies in kind, extent, and intensity; along with characteristics of population and land uses which are unique by virtue of regional locations. Sub-sections in this profile include:

Regional characteristics (urban/rural population; retail sales; disposable income; and per capita income)	
Regional climate and terrain	Regional trading areas/urban centers of economic activity
Boundaries	Administration & county government
Congressional representation	State government

### Demographic Profile

The characteristics of individuals in poverty are reflected in the characteristics of their communities. Contrasts and similarities in the distribution, trends and levels of population characteristics, are essential information in identifying and combating individual and community problems. Sub-sections include:

Distribution of population	Population Change	Racial components of population
----------------------------	-------------------	---------------------------------

## Economic Profile

This section consists of two sub-sections: Characteristics of the labor force and Government finance, revenues, and expenditures.

Among characteristics of the labor force which are also related to poverty is the population of workers holding jobs in skilled and high-paid positions. In communities where the educational and economic opportunities are limited, these jobs are limited, implying under-employment of skills and the existence of under-developed human resources.

Government finance – revenues and expenditures – is based on a variety of taxes, including property, utilities, sales, income, and investment earnings. These revenues affect support of education, law enforcement, fire protection, highways, sewerage and other sanitation, public assistance, libraries, hospitals, healthcare, parks and recreation, urban renewal, corrections, and public buildings, among others.

## Social Profile

This section consists of three sub-sections: Community health facilities and manpower, Housing, and Education.

Poverty-stricken areas generate far less government revenue. The statistics and narrative in this sub-section assess the extent of Community Health Facilities and Manpower.

Conditions and characteristics of Housing are associated with the incidence and degree of poverty in a community. A basic indicator of housing adequacy is the percentage of dwelling units not dilapidated. Also, the number of persons per room in a dwelling unit is another indicator of housing inadequacy—the number of persons is also an indicator of crowded housing conditions. The status of housing is assessed by a number indicators of household prosperity compared with national averages. These indicators include the number of: washing machines, freezers, air conditioners, televisions, telephones, and automobiles. Information on renter-occupied dwellings and gross rent statistics are also used to assess housing adequacy.

The level of educational achievement and facilities in a community is an indicator of its socio-economic status. The extent of functional illiteracy, measured by local government expenditures on education, is also detailed in these Community Profile section.

These Community Profiles provide an in-depth analysis of poverty in America by providing an extensive inventory of current and historical data of the U.S. at a local level.

**Part 1: Western States**, includes Alaska, Arizona, California, Colorado, Hawaii, Idaho, Montana, Nevada, New Mexico, Oregon, Utah, Washington and Wyoming

**Part 2: Midwestern States**, includes Illinois, Indiana, Iowa, Kansas, Michigan, Minnesota, Missouri, Nebraska, North Dakota, Ohio, South Dakota, Wisconsin

**Part 3: Southern States**, includes Alabama, Arkansas, Delaware, Florida, Georgia, Louisiana, Maryland, Mississippi, North Carolina, Oklahoma, South Carolina, Tennessee, Virginia, West Virginia

**Part 4: Northeastern States**, includes Connecticut, Maine, Massachusetts, New Hampshire, New Jersey, New York, Pennsylvania, Rhode Island, Vermont

**Part 5: Texas**



## **SOURCE AND EDITORIAL NOTE**

The documents comprising this microform publication are from the Presidential Papers of Lyndon Baines Johnson, White House Office Files, Office Files of Fred Panzer: Office of Economic Opportunity Information Center, "Community Profiles," in the custody of the Lyndon Baines Johnson Library in Austin, Texas. The documents comprising this microform publication have been filmed in their entirety and as they are arranged at the Lyndon Baines Johnson Library.

## **ACKNOWLEDGMENTS**

Primary Source Media Gale would like to acknowledge the assistance and cooperation of the Lyndon Baines Johnson Library in Austin, Texas. Mrs. Christina Houston and her staff, particularly Claudia Anderson were most helpful and patient in providing the support necessary for completion of this microform publication. Their efforts are greatly appreciated.

# REEL INDEX

The following is a listing of the folders comprising the microfilm publication entitled *Part 2: Community Profiles Northeastern States*. The Reel Index lists the series and subseries, the folder title, as well as a listing of the major subjects and principal correspondents for each folder.

## REEL 1

*Folder #*

### **Connecticut** **Fairfield thru Windham Counties**

- [1] **Fairfield County, Connecticut.**
- [2] **Hartford County, Connecticut.**
- [3] **Litchfield County, Connecticut.**
- [4] **Middlesex County, Connecticut.**
- [5] **New Haven County, Connecticut.**
- [6] **New London County, Connecticut.**
- [7] **Tolland County, Connecticut.**
- [8] **Windham County, Connecticut.**

### **Maine** **Androscoggin thru York Counties**

- [9] **Androscoggin County, Maine.**
- [10] **Aroostook County, Maine.**
- [11] **Cumberland County, Maine.**
- [12] **Franklin County, Maine.**
- [13] **Hancock County, Maine.**
- [14] **Kennebec County, Maine.**
- [15] **Knox County, Maine.**

- [16] **Lincoln County, Maine.**
- [17] **Oxford County, Maine.**
- [18] **Penobscot County, Maine.**
- [19] **Piscataquis County, Maine.**
- [20] **Sagadahoc County, Maine.**
- [21] **Somerset County, Maine.**

## **REEL 2**

*Folder #*

### **Maine** **Androscoggin thru York Counties cont.**

- [22] **Waldo County, Maine.**
- [23] **Washington County, Maine.**
- [24] **York County, Maine.**

### **Massachusetts** **Barnstable thru Worcester Counties**

- [25] **Barnstable County, Massachusetts.**
- [26] **Berkshire County, Massachusetts.**
- [27] **Bristol County, Massachusetts.**
- [28] **Dukes County, Massachusetts.**
- [29] **Essex County, Massachusetts.**
- [30] **Franklin County, Massachusetts.**
- [31] **Hampden County, Massachusetts.**
- [32] **Hampshire County, Massachusetts.**
- [33] **Middlesex County, Massachusetts.**

- [34] Nantucket County, Massachusetts.
- [35] Norfolk County, Massachusetts.
- [36] Plymouth County, Massachusetts.
- [37] Suffolk County, Massachusetts.
- [38] Worcester County, Massachusetts.

**New Hampshire**  
**Belknap thru Sullivan Counties**

- [39] Belknap County, New Hampshire.
- [40] Carroll County, New Hampshire.
- [41] Cheshire County, New Hampshire.

**REEL 3**

*Frame #*

**New Hampshire cont.**  
**Belknap thru Sullivan Counties cont.**

- [42] Coos County, New Hampshire.
- [43] Grafton County, New Hampshire.
- [44] Hillsborough County, New Hampshire.
- [45] Merrimack County, New Hampshire.
- [46] Rockingham County, New Hampshire.
- [47] Stafford County, New Hampshire.
- [48] Sullivan County, New Hampshire.

**New Jersey**  
**Volume I of II Atlantic thru Mercer Counties**

- [49] Atlantic County, New Jersey.
- [50] Bergen County, New Jersey.

- [51] **Burlington County, New Jersey.**
- [52] **Camden County, New Jersey.**
- [53] **Cape May County, New Jersey.**
- [54] **Cumberland County, New Jersey.**
- [55] **Essex County, New Jersey.**
- [56] **Gloucester County, New Jersey.**
- [57] **Hudson County, New Jersey.**
- [58] **Hunterdon County, New Jersey.**
- [59] **Mercer County, New Jersey.**

**New Jersey**  
**Volume II of II Middlesex thru Warren Counties**

- [60] **Middlesex County, New Jersey.**
- [61] **Monmouth County, New Jersey.**

**REEL 4**

*Frame #*

**New Jersey cont.**  
**Volume II of II Middlesex thru Warren Counties cont.**

- [62] **Morris County, New Jersey.**
- [63] **Ocean County, New Jersey.**
- [64] **Passaic County, New Jersey.**
- [65] **Salem County, New Jersey.**
- [66] **Somerset County, New Jersey.**
- [67] **Sussex County, New Jersey.**
- [68] **Union County, New Jersey.**

[69] **Warren County, New Jersey.**

**New York**  
**Volume I of IV, Albany thru Essex Counties**

[70] **Albany County, New York.**

[71] **Allegany County, New York.**

[72] **Bronx County, New York.**

[73] **Broome County, New York.**

[74] **Cattaraugus County, New York.**

[75] **Cayuga County, New York.**

[76] **Chautauqua County, New York.**

[77] **Chemung County, New York.**

[78] **Chenango County, New York.**

[79] **Clinton County, New York.**

[80] **Columbia County, New York.**

[81] **Cortland County, New York.**

**REEL 5**

*Frame #*

**New York cont.**  
**Volume I of IV, Albany thru Essex Counties cont.**

[82] **Delaware County, New York.**

[83] **Duchess County, New York.**

[84] **Erie County, New York.**

[85] **Essex County, New York.**

**New York cont.**  
**Volume II of IV, Franklin thru Niagara Counties**

- [86] Franklin County, New York.
- [87] Fulton County, New York.
- [88] Genesee County, New York.
- [89] Greene County, New York.
- [90] Hamilton County, New York.
- [91] Herkimer County, New York.
- [92] Jefferson County, New York.
- [93] Kings County, New York.
- [94] Lewis County, New York.
- [95] Livingston County, New York.
- [96] Madison County, New York.
- [97] Monroe County, New York.
- [98] Montgomery County, New York.
- [99] Nassau County, New York.
- [100] Niagara County, New York.

**REEL 6**

*Frame #*

**New York cont.**  
**Volume III of IV, Oneida thru Schenectady Counties**

- [101] Oneida County, New York.
- [102] Onondaga County, New York.
- [103] Ontario County, New York.

- [104] **Orange County, New York.**
- [105] **Orleans County, New York.**
- [106] **Oswego County, New York.**
- [107] **Otsego County, New York.**
- [108] **Putnam County, New York.**
- [109] **Queens County, New York.**
- [110] **Rensselaer County, New York.**
- [111] **Richmond County, New York.**
- [112] **Rockland County, New York.**
- [113] **St. Lawrence County, New York.**
- [114] **Saratoga County, New York.**
- [115] **Schenectady County, New York.**

**New York cont.**  
**Volume IV of IV, Schoharie thru Yates Counties**

- [116] **Schoharie County, New York.**
- [117] **Schuyler County, New York.**
- [118] **Seneca County, New York.**
- [119] **Steuben County, New York.**
- [120] **Suffolk County, New York.**
- [121] **Sullivan County, New York.**



## **REEL 7**

*Frame #*

### **New York cont.** **Volume IV of IV, Schoharie thru Yates Counties cont.**

- [122] **Tioga County, New York.**
- [123] **Tompkins County, New York.**
- [124] **Ulster County, New York.**
- [125] **Warren County, New York.**
- [126] **Washington County, New York.**
- [127] **Wayne County, New York.**
- [128] **Westchester County, New York.**
- [129] **Wyoming County, New York.**
- [130] **Yates County, New York.**

### **Pennsylvania** **Volume I of V, Adams thru Centre Counties**

- [131] **Adams County, Pennsylvania.**
- [132] **Allegheny County, Pennsylvania.**
- [133] **Armstrong County, Pennsylvania.**
- [134] **Beaver County, Pennsylvania.**
- [135] **Bedford County, Pennsylvania.**
- [136] **Berks County, Pennsylvania.**
- [137] **Blair County, Pennsylvania.**
- [138] **Bradford County, Pennsylvania.**
- [139] **Bucks County, Pennsylvania.**
- [140] **Butler County, Pennsylvania.**

[141] Cambria County, Pennsylvania.

[142] Cameron County, Pennsylvania.

## **REEL 8**

*Frame #*

### **Pennsylvania cont. Volume I of V, Adams thru Centre Counties cont.**

[143] Carbon County, Pennsylvania.

[144] Centre County, Pennsylvania.

### **Pennsylvania cont. Volume II of V, Chester thru Franklin Counties**

[145] Chester County, Pennsylvania.

[146] Clarion County, Pennsylvania.

[147] Clearfield County, Pennsylvania.

[148] Clinton County, Pennsylvania.

[149] Columbia County, Pennsylvania.

[150] Crawford County, Pennsylvania.

[151] Cumberland County, Pennsylvania.

[152] Dauphin County, Pennsylvania.

[153] Delaware County, Pennsylvania.

[154] Elk County, Pennsylvania.

[155] Erie County, Pennsylvania.

[156] Fayette County, Pennsylvania.

[157] Forest County, Pennsylvania.

[158] Franklin County, Pennsylvania.

**Pennsylvania cont.**  
**Volume III of V, Fulton thru Lycoming Counties**

- [159] **Fulton County, Pennsylvania.**
- [160] **Greene County, Pennsylvania.**
- [161] **Huntingdon County, Pennsylvania.**
- [162] **Indiana County, Pennsylvania.**

**REEL 9**

*Frame #*

**Pennsylvania cont.**  
**Volume III of V, Fulton thru Lycoming Counties cont.**

- [163] **Jefferson County, Pennsylvania.**
- [164] **Juniata County, Pennsylvania.**
- [165] **Lackawanna County, Pennsylvania.**
- [166] **Lancaster County, Pennsylvania.**
- [167] **Lawrence County, Pennsylvania.**
- [168] **Lebanon County, Pennsylvania.**
- [169] **Lehigh County, Pennsylvania.**
- [170] **Luzerne County, Pennsylvania.**
- [171] **Lycoming County, Pennsylvania.**

**Pennsylvania cont.**  
**Volume IV of V, Mc Kean thru Schuylkill Counties**

- [172] **Mc Kean County, Pennsylvania.**
- [173] **Mercer County, Pennsylvania.**
- [174] **Mifflin County, Pennsylvania.**

- [175] **Monroe County, Pennsylvania.**
- [176] **Montgomery County, Pennsylvania.**
- [177] **Montour County, Pennsylvania.**
- [178] **Northampton County, Pennsylvania.**
- [179] **Northumberland County, Pennsylvania.**
- [180] **Perry County, Pennsylvania.**
- [181] **Philadelphia County, Pennsylvania.**
- [182] **Pike County, Pennsylvania.**

## **REEL 10**

*Frame #*

### **Pennsylvania cont.** **Volume IV of V, Mc Kean thru Schuylkill Counties cont.**

- [183] **Potter County, Pennsylvania.**
- [184] **Schuylkill County, Pennsylvania.**

### **Pennsylvania cont.** **V of V, Snyder thru York Counties**

- [185] **Snyder County, Pennsylvania.**
- [186] **Somerset County, Pennsylvania.**
- [187] **Sullivan County, Pennsylvania.**
- [188] **Susquehanna County, Pennsylvania.**
- [189] **Tioga County, Pennsylvania.**
- [190] **Union County, Pennsylvania.**
- [191] **Venango County, Pennsylvania.**
- [192] **Warren County, Pennsylvania.**

[193] **Washington County, Pennsylvania.**

[194] **Wayne County, Pennsylvania.**

[195] **Westmoreland County, Pennsylvania.**

[196] **Wyoming County, Pennsylvania.**

[197] **York County, Pennsylvania.**

**Rhode Island**  
**Bristol thru Washington Counties**

[198] **Bristol County, Rhode Island.**

[199] **Kent County, Rhode Island.**

[200] **Newport County, Rhode Island.**

[201] **Providence County, Rhode Island.**

[202] **Washington County, Rhode Island.**

**REEL 11**

*Frame #*

**Vermont**  
**Addison thru Windsor Counties**

[203] **Addison County, Vermont.**

[204] **Bennington County, Vermont.**

[205] **Caledonia County, Vermont.**

[206] **Chittenden County, Vermont.**

[207] **Essex County, Vermont.**

[208] **Franklin County, Vermont.**

[209] **Grand Isle County, Vermont.**

[210] **Lamoille County, Vermont.**

- [211] **Orange County, Vermont.**
- [212] **Orleans County, Vermont.**
- [213] **Rutland County, Vermont.**
- [214] **Washington County, Vermont.**
- 215] **Windham County, Vermont.**
- [216] **Windsor County, Vermont.**



# **RELATED COLLECTIONS**

## **The War on Poverty and the Office of Economic Opportunity**

**Part I: Records of the Office of Civil Rights, 1965-1968**

**Part II: Community Profiles**

**Western States**

**Midwestern States**

**Southern States**

**Texas**

## **Civil Rights and Social Activism in the South**

**Series 1: Civil Rights and Social Activism in Alabama**

**Series 2: The Legal Battle for Civil Rights in Alabama**

**Series 3: James Dombrowski and the Southern Conference Education Fund**

## **Collections of the United Farm Workers of America**

**Series 1: Office Files of the President of the United Farm Workers of America**

**Series 2: Papers of the United Farm Workers Work Department, 1969-1975**

**Series 3: Papers of the United Farm Workers Administration Department, 1960-1975**

## **The Detroit Urban League Papers**

## **NAACP Office of Field Director of Louisiana Records, 1964–1976**

## **Records of the Highlander Folk School and Highlander Research and Education Center, 1932–1978**